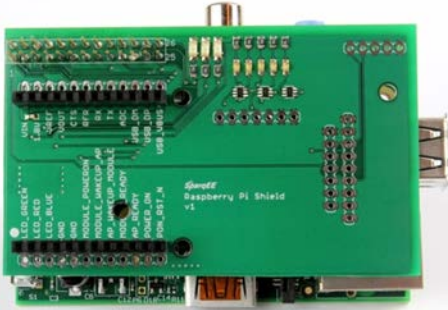


ShieldRv1.0 Datasheet



The ShieldRv1.0 is a shield or connecting board that connects the CELLv1.0 to the Raspberry Pi without any additional wiring. It also provides LEDs for the CELLv1.0 status lines.

In addition, breakouts are provided for the four additional SparqEE boards (ACCELv1.0, GPSv1.0, POWERv1.0, RELAYv1.0) if the user prefers to directly connect any of those boards to the shield.

- SparqEE: <http://sparqee.com/>
- Raspberry Pi Shield: <http://www.sparqee.com/products/sparqee-shieldr>
- Forum: <http://www.forum.sparqee.com/>
- Code/Drivers: <http://www.sparqee.com/code-cell/>



Ecosystem:

SparqEE helps you every step of the way with the CELLv1.0 to easily get your data from Your Device, through The Cloud, and back out to Your Smartphone or Computer!



Specification:

Physical

- 56mm x 85mm (2.20" x 3.35")
- Weight: 0.80oz

Operating Temperature

- -40°C to +85°C